

CANDIDATE MANIFESTO

YOUR NAME:

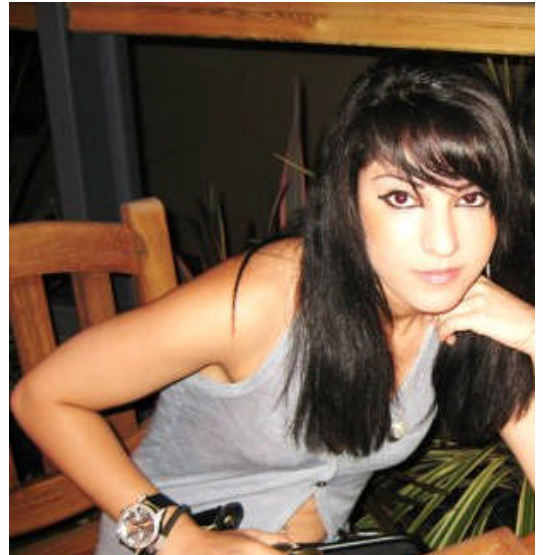
Sara Hassani

YOUR DEPARTMENT:

Political Science

THE POSITION YOU ARE APPLYING FOR:

Post-Graduate Association Vice President

YOUR PHOTO:**YOUR 100 WORD SUMMARY:**

Maturing in a particularly diverse household, I have been made aware of electoral systems at all levels and the responsibilities which come with taking on a role within any political environment, however large or small. I studied a BA in International Relations at the University of Leeds and now I am here at UCL studying an MSc in International Public Policy. Thus I am familiar with how important it is to have a means of representation in different university institutions. For this reason, and many others, you, the student body, can be assured that if given the opportunity to represent you, I will take my role as post-graduate vice president extremely seriously.

YOUR MANIFESTO:

As our post-graduate community at UCL comprises students from approximately 80 different countries, it is vital that we can all contribute at an individual level in order to develop a thriving and colourful post-graduate society. I have worked as a volunteer in organisations such as the Refugee Council and Refugee and Migrant Justice, thus I am able to engage with many different types of people and the problems they face. Moreover I can adapt well to varied circumstances and understand the importance of team work. If voted for, I will adapt my experiences to my new role as vice president, work to the best of my ability to represent the voice of the post-graduate student body and while recognising the democratic nature of the UCLU, I will expect full accountability at all times. Thus, as a PGA Vice president I aim to:

- ♣ Ensure PG's are made aware of upcoming opportunities and events: both educational and social
- ♣ Help promote collaboration between different international groups of students; aiming to form one united group of PG's
- ♣ Ensure students who are new to the 'London experience' have as many available means as possible to adjusting, 'getting around', and being made aware of the fantastic opportunities this fantastic city has to offer.
- ♣ Make sure that part time jobs for students are regularly posted in the union and ensure readily available advice regarding issues associated with time management for those who may wish to work during their studies. Lastly...
- ♣ PG study is very intense and thus it's essential that students can depend on their union, not only as an events forum but also as an outlet for everyday stresses and strains, therefore I aim to provide a friendly service where students can 'let off steam' and interact with other PG's sharing the same experiences.

VOTE!

